

## SPECIALIZED SMART 4D WHEEL ALIGNER

MODEL - PWL-1195



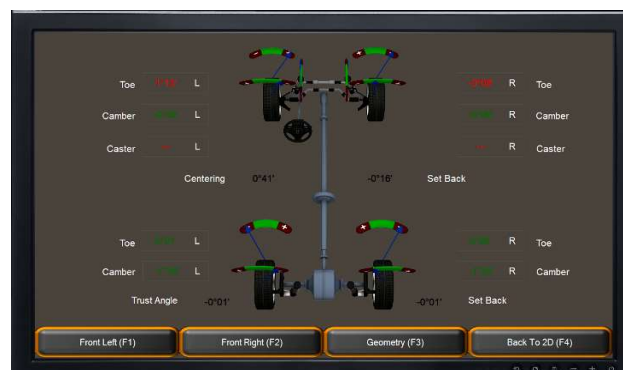
- **SMART 4D** Wheel Alignment System is designed to take measurements and perform alignment on steerable and unsteerable wheels in automotive dealer workshops, car service stations, automotive manufacturing plants and diagnostic centers
- 3D Image Tech based Wheel Aligner using 2 Digital High Resolution ANDROID based Cameras for very fast and accurate Wheel Alignment using cutting edge Software.
- The operation of the Wheel Aligner is based on measurements of wheel axis angle parameters by digital video cameras and high-precision image targets.
- Twin pod design with wifi connected pad for ultimate flexibility.
- Suitable for PIT operation
- All display on wireless TAB.

### HIGHLIGHTS

**SUPERB + Software is a powerful and modern means of checking and controlling wheel alignment**

Continuous data processing and measurement displaying

Easy operating away from the monitor with colour indicators

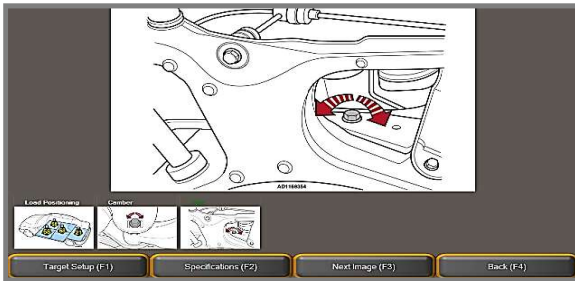


Automatic parameter assessment of compliance with specifications

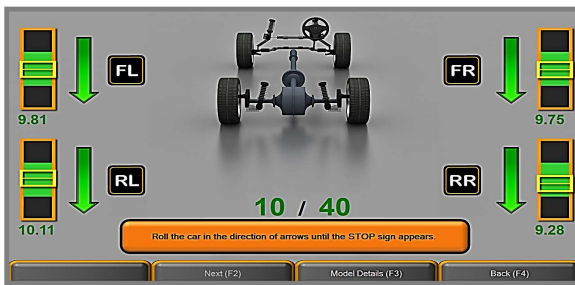
Quick access to other program modes



Database Image View



Rolling Compensation mode



2 D Adjustment Mode

|   |   |   |   |   |
|---|---|---|---|---|
| <b>Toe(L)</b><br>0°0' 0°0' 0°0'<br><b>-0°07'</b>        | <b>Total Toe</b><br>-0°09' 0°11' 0°32'<br><b>-0°16'</b> | <b>Toe(R)</b><br>0°0' 0°0' 0°0'<br><b>-0°09'</b>        | <b>Centering</b><br>-0°02' 0°0' 0°02'<br><b>0°02'</b> |   |
| <b>Camber(L)</b><br>0°45' -0°3' -1°45'<br><b>-0°14'</b> | <b>Cross Camber</b><br>---- ---- ----<br><b>-0°02</b>   | <b>Camber(R)</b><br>-1°45' -0°3' 0°45'<br><b>-0°16'</b> |   | <b>Setback</b><br>---- ---- ----<br><b>0°01'</b>      |
| <b>Caster(L)</b><br>2°3' 3°3' 4°3'<br><b>3°07'</b>      | <b>Cross Caster</b><br>---- ---- ----<br><b>-4°02</b>   | <b>Caster(R)</b><br>4°3' 3°3' 2°3'<br><b>3°07'</b>      |   | <b>Thrust Angle</b><br>---- ---- ----<br><b>-0°04</b> |
| Rear VIEW   | Repeat Measurement                                      | Degree - MM   |   | Final Report  |

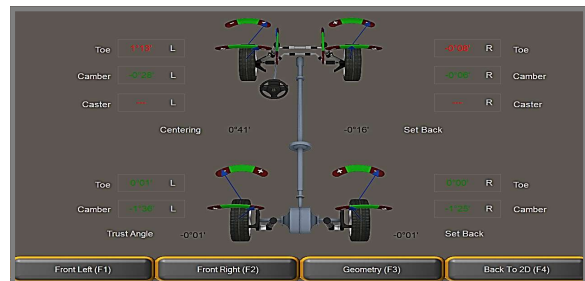
## CENTERING FUNCTION

The centering function allows to accurately set the front TOE value, within the prescribed tolerance, so that the vehicle goes straight; saving on repeat jobs

Measurement Mode

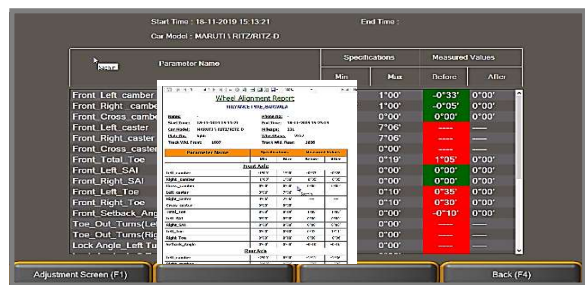


3 D Adjustment Mode



3D Visualization, 7 modes

Report Mode



## HIGHLIGHTS

### 2-camera Wheel Alignment System MACHINE VISION SYSTEM



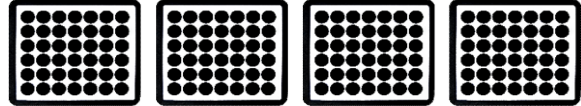
HD cameras allow a quick and reliable target "capture"

Special software promotes high-precision recognition of targets in space on the basis of received images



### TARGETS

Compact and easy targets  
One target for each wheel  
Easy to handle  
The front panel is protected with a rubberized border  
No Electronic components  
No need to calibrate targets



### WHEEL ADAPTERS

Self-centering wheel adapters with the mobile central part fit 12"-21" wheel disks



## OPTIONAL

- 1.7m Long Professional Sliding Plates
- Calibration Kit

## TECHNICAL SPECIFICATIONS

| Front Wheel Alignment             | Measurement                  |
|-----------------------------------|------------------------------|
| Camber Angle                      | ± 8,00°                      |
| Front Axle Total Toe Angle        | ± 5,00°                      |
| Caster Angle                      | ± 19,00°                     |
| SAI / KPI                         | ± 19,00°                     |
| Lock Angle                        | ± 45,00°                     |
| <b>Front Wheel Alignment</b>      |                              |
| Camber Angle                      | ± 8,00°                      |
| Rear Axle Total Toe Angle         | ± 5,00°                      |
| Rear Individual Toe Angle         | ± 19,00°                     |
| <b>Symmetry Angles</b>            |                              |
| Front Set Back                    | ±2,50°                       |
| Rear Set Back                     | ±2,50°                       |
| Thrust Angle                      | ±2,50°                       |
| Geometrical Driving Axis          | ±2,50°                       |
| Power Supply                      | 1 Phase, 230 Vac. - 50/60 Hz |
| Absorbed Power                    | 500 W                        |
| Noise level in working conditions | < 70 db (A)                  |

\* Specifications subject to change without notice

\*\* Images shown are for representation purpose only. Accessories & features shown in the picture may not be part of the standard equipment

## PRECISION TESTING MACHINES PVT. LTD.

HEAD OFFICE: S-12, Okhla Industrial Area, Phase - II, New Delhi - 110 020 (India)

Tel.: 011-4161-0000 (4 lines), 2638-6612 Fax: 011-26383790

E-mail : sales@precisionworld.net / service@precisionworld.net / www.precisionworld.net