

AIR TUBE DRYING SYSTEM

MODEL - PBB-0900S
PBB-0900T



- **Air Tube Drying System (ATD)** installed inside the Paint Booth speeds up drying times of waterborne basecoat and HS clear coats with 30 to 50%
- Speeds up drying times of 2 component paints by minimally 30%
- Increase of productivity – reduction in energy costs
- Enhancement of the drying process – extra comfort for the sprayer
- Displacing 5000 m³/h only consuming 1,1 Kw for each side
- Simply the best investment a body shop can make nowadays to increase profitability

HIGHLIGHTS



ATD SYSTEM

TECHNICAL SPECIFICATIONS

Electric Motor	
Electric Power	1.5 HP, 1.1 Kw x 2
Air displacement	5000 m ³ /h x 2
Air spraying adjustable jet outlets	24 Nos.

THE PRINCIPLE

Extremely Fast Drying Times

In order to dry waterborne paints more quickly we need to create a better contact of the airflow inside the spray booth with the object that needs to be dried.

As a result the dampness will be removed faster, which is necessary to improve the drying time of waterborne paints. In a spray booth without ATD (Air Tube Drying System) the vertical airflow makes very little contact with the object due to its aero-dynamic shape. A higher volume of vertical airflow will only increase the aerodynamic effect, and will be counterproductive for drying waterborne paints.

ATD speeds up drying times of waterborne paints by minimally 30 to 50%

SMOKE CHECK



Less Aerodynamic Effect



Higher Aerodynamic Effect

Smoke Check clearly shows advantage with ATD

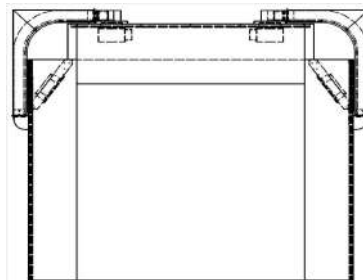
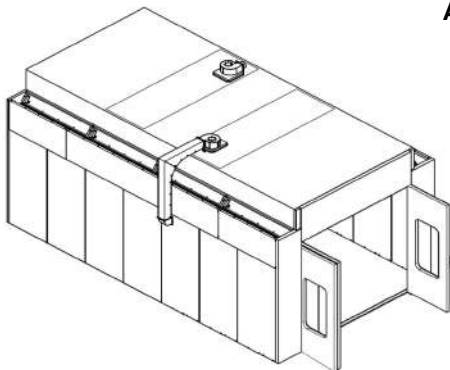
MODEL - PBB-0900S

AIR HANDLING SYSTEM ON SIDES



MODEL - PBB-0900T

AIR HANDLING SYSTEM ON TOP



* Specifications subject to change without notice

** Images shown are for representation purpose only. Accessories & features shown in the picture may not be part of the standard equipment

PRECISION TESTING MACHINES PVT. LTD.

2

HEAD OFFICE: S-12, Okhla Industrial Area, Phase - II, New Delhi - 110 020 (India)

Tel.: 011-4161-0000 (4 lines), 2638-6612 Fax: 011-26383790

E-mail : sales@precisionworld.net / service@precisionworld.net / www.precisionworld.net



STORE TO BUY GENUINE **PRECISION** LIGHT EQUIPMENT & CONSUMABLES
Visit www.ptmeway.com