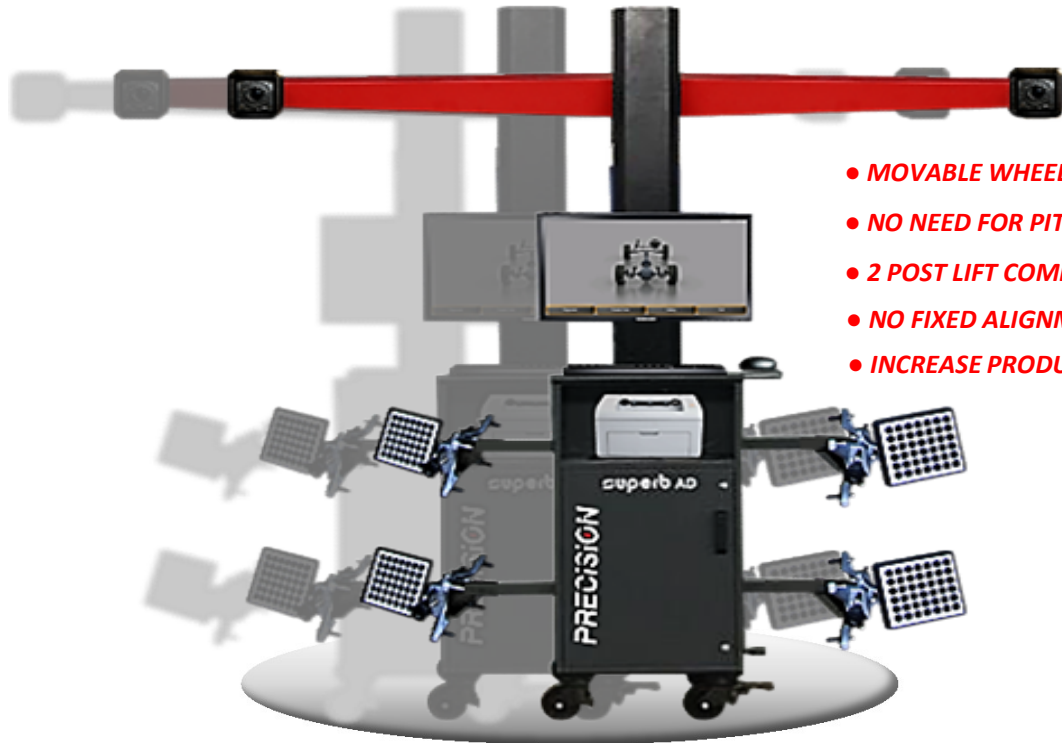


**PROFESSIONAL 2 CAMERA  
MOBILE 3D WHEEL ALIGNER  
ON WHEELS**

**MODEL - PWL-392M**

**MOVE IT - ANYWHERE EVERYWHERE**



- **MOVABLE WHEEL ALIGNER**
- **NO NEED FOR PIT**
- **2 POST LIFT COMPATIBLE**
- **NO FIXED ALIGNMENT BAY**
- **INCREASE PRODUCTIVITY**

- **SUPERB 360** A moveable Wheel Alignment System designed to take measurements and perform alignment on vehicles raised on lift with wheels in suspended position
- The moveability helps to position the machine in any bay where the vehicle is, thus saving time to move every vehicle to bring in the dedicated alignment bay..
- This dual capability also makes it an ideal machine for tyre shoppees with space constraints and a moveable system is the only way.
- Capability to perform alignment with wheels raised and in suspended position also make it an ideal to partner with a moveable wheel lift, thereby making it an anywhere machine
- It's a Revolution

**HIGHLIGHTS**

**SUPERB Software is a powerful and modern means of checking and controlling wheel alignment**

Continuous data processing and measurement displaying

Easy operating away from the monitor with colour indicators

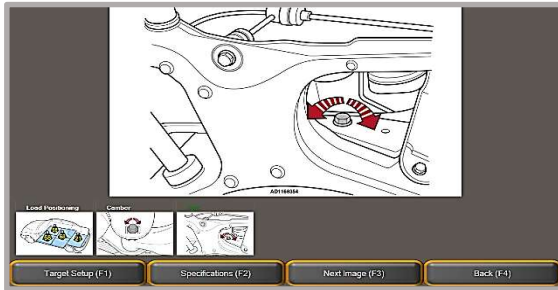


Automatic parameter assessment of compliance with specifications

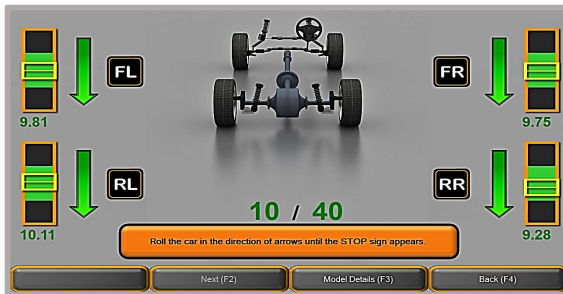
Quick access to other program modes



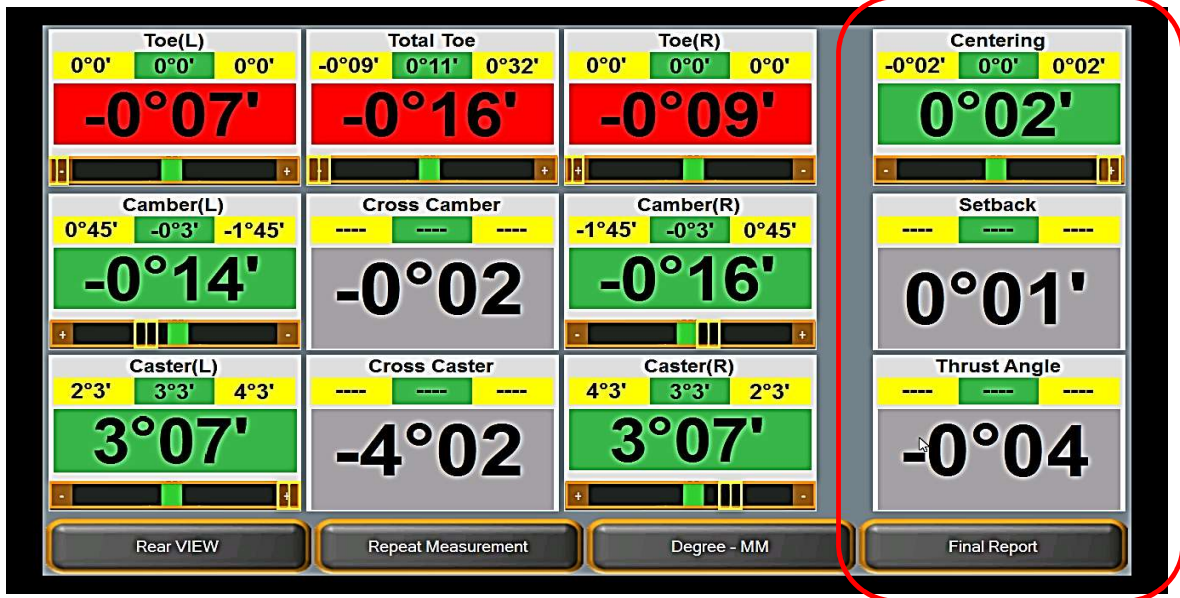
Database Image View



Rolling Compensation mode



2 D Adjustment Mode



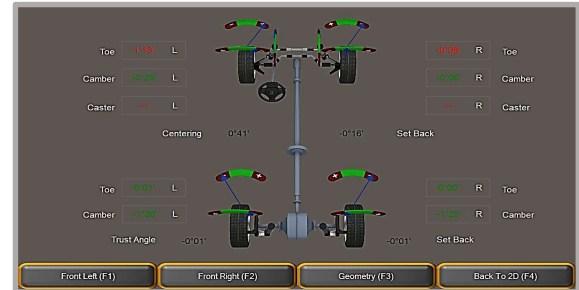
**CENTERING FUNCTION**

The centering function allows to accurately set the front TOE value, within the prescribed tolerance, so that the vehicle goes straight; saving on repeat jobs

Measurement Mode



3 D Adjustment Mode

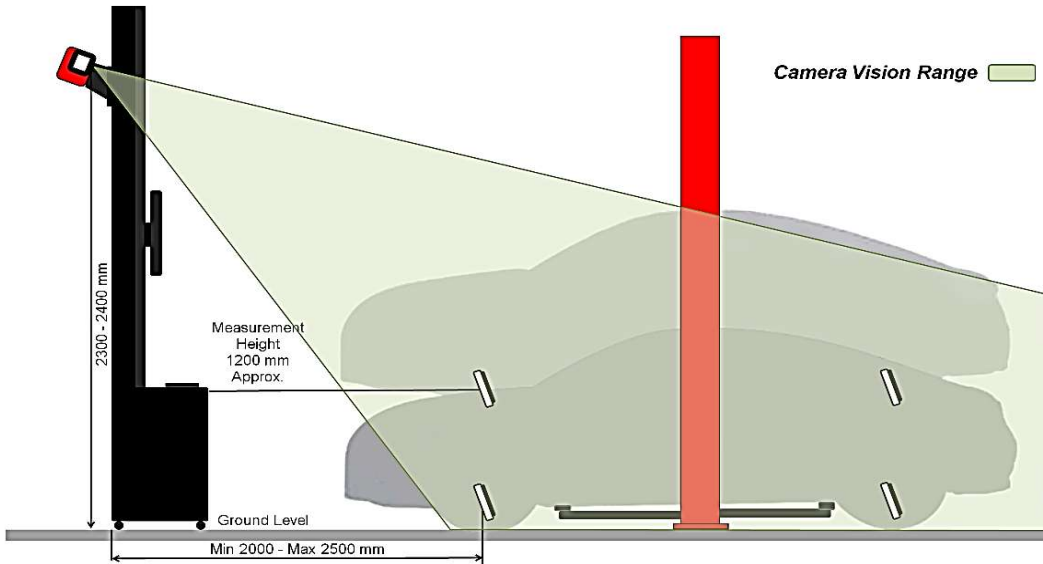


3D Visualization, 7 modes

Report Mode

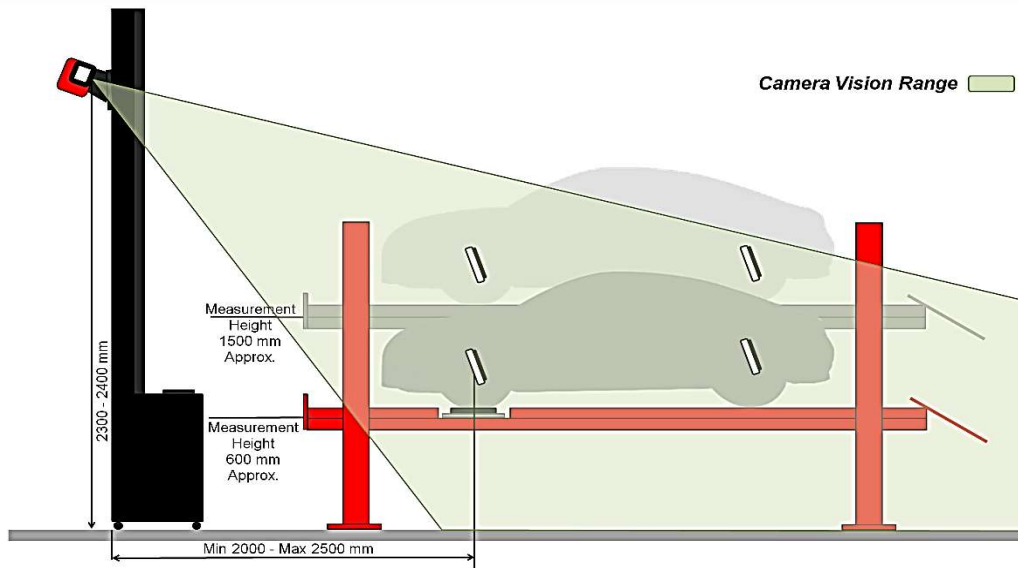


## ALIGNING VEHICLE WHEELS IN SUSPENDED MODE ON 2 POST LIFT



The 2-camera Wheel Aligner allows to take measurements and perform alignments on the lift in the range of lift heights of 0 to 1200\* mm from the floor level

## ALIGNING VEHICLE WHEELS ON 4 POST LIFT



The 2-camera Wheel Aligner allows to take measurements and perform alignments on the lift in the range of lift heights of 600 to 1500\* mm approx. from the floor level

- ALIGNING VEHICLE - IN LIFTED CONDITION WITH WHEEL SUSPENDED



On 2 Post Lift



On Portable Wheel Service Lift

## HIGHLIGHTS

### 2-camera

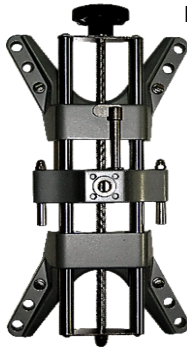
#### Wheel Alignment System

#### MACHINE VISION SYSTEM



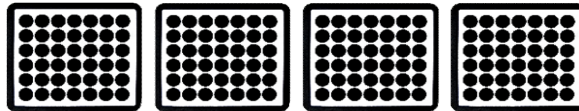
HD cameras allow a quick and reliable target "capture" and a high image transfer to PC over TCP/IP

Special software promotes high-precision recognition of targets in space on the basis of received images



### TARGETS

Compact and easy targets  
One target for each wheel  
Easy to handle  
The front panel is protected with a rubberized border  
No Electronic components  
No need to calibrate targets



### WHEEL ADAPTERS

Self-centering wheel adapters with the mobile central part fit 12"-21" wheel disks



**OPTIONAL** • 1.7m Long Professional Sliding Plates • Calibration Kit

## TECHNICAL SPECIFICATIONS

### Front Wheel Alignment

	Measurement
Camber Angle	± 8,00°
Front Axle Total Toe Angle	± 5,00°
Caster Angle	± 19,00°
SAI / KPI	± 19,00°
Lock Angle	± 45,00°

### Rear Wheel Alignment

Camber Angle	± 8,00°
Rear Axle Total Toe Angle	± 5,00°
Rear Individual Toe Angle	± 19,00°

### Symmetry Angles

Front Set Back	±2,50°
Rear Set Back	±2,50°
Thrust Angle	±2,50°
Geometrical Driving Axis	±2,50°
Power Supply	1 Phase, 230 Vac. - 50/60 Hz
Absorbed Power	500 W
Noise level in working conditions	< 70 db (A)

\* Specifications subject to change without notice

\*\* Images shown are for representation purpose only. Accessories & features shown in the picture may not be part of the standard equipment

## PRECISION TESTING MACHINES PVT. LTD.

HEAD OFFICE: S-12, Okhla Industrial Area, Phase - II, New Delhi - 110 020 (India)

Tel.: 011-4161-0000 (4 lines), 2638-6612 Fax: 011-26383790

E-mail : sales@precisionworld.net / service@precisionworld.net / [www.precisionworld.net](http://www.precisionworld.net)



STORE TO BUY GENUINE **PRECISION** LIGHT EQUIPMENT & CONSUMABLES  
Visit [www.ptmeway.com](http://www.ptmeway.com)